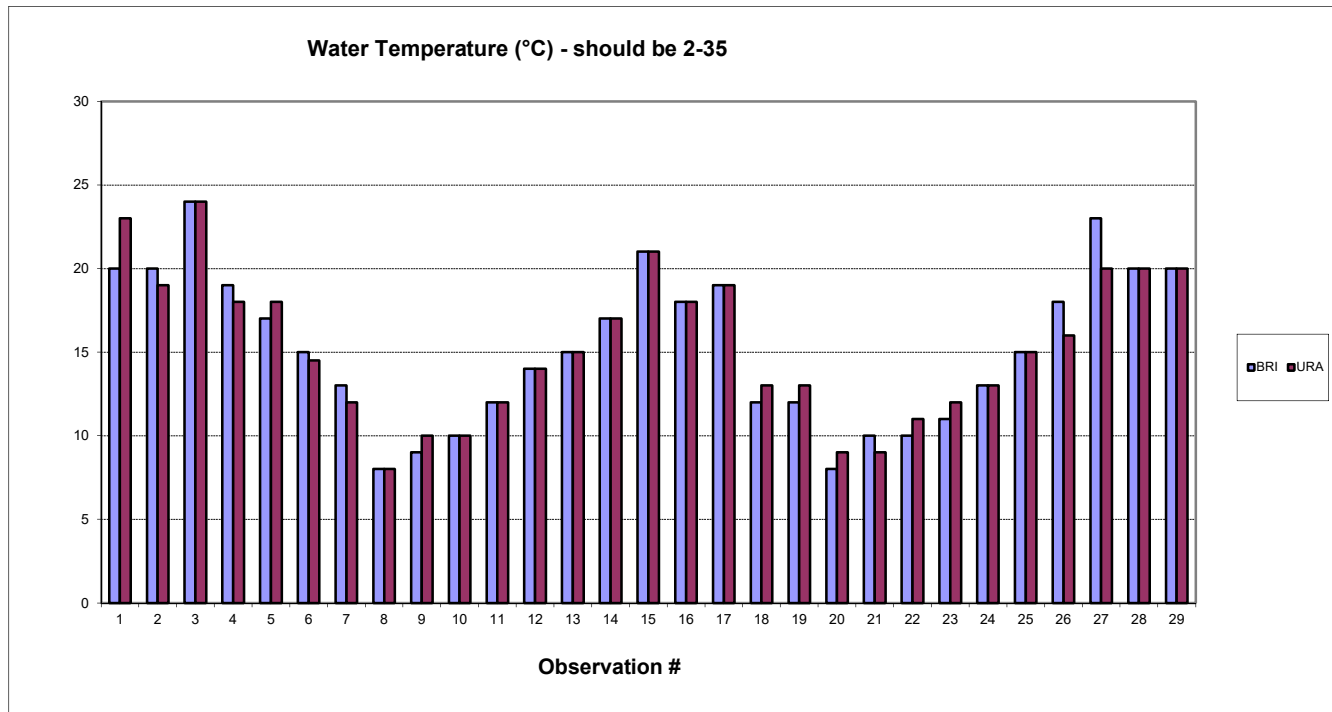


## WaterWatch comparison Report. Series 4. December 2020

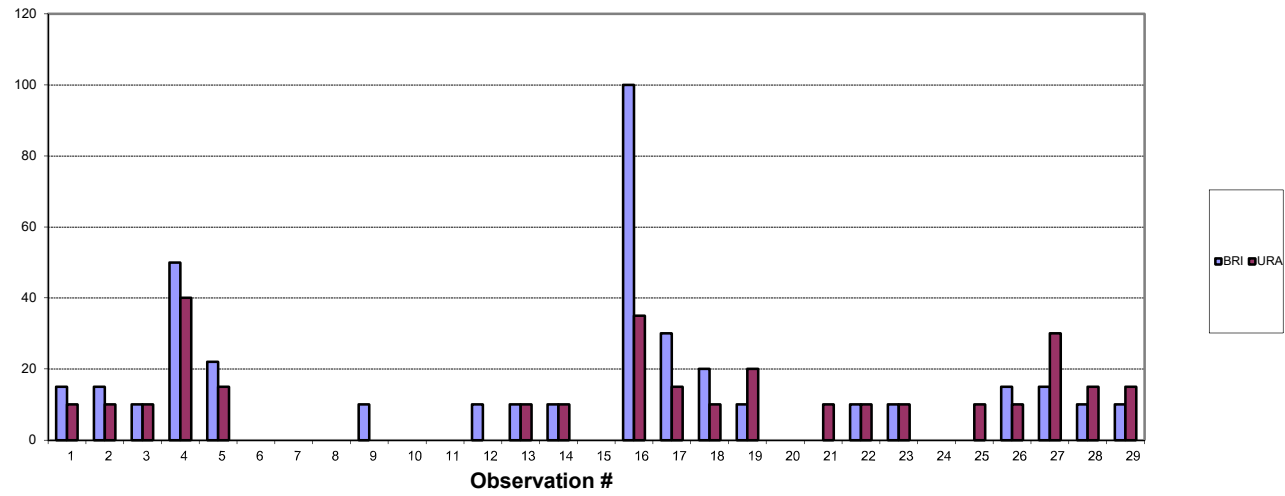
Observ'n #	1	2	3	4	5	6	7	8	9	10	11	12	13	14	15	16	17	18	19
Date	26.11.17	23.12.17	28.1.18	25.2.18 *	24.3.18	22.4.18	27.5.18	24.6.18	24.7.18	26.8.18	23.9.18	28.10.18	25.11.18	23.12.18	27.1.19	24.2.19 *	24.3.19	28.4.19	25.5.19
Observ'n #	20	21	22	23	24	25	26	27	28	29	30	31	32	33	34	35	36	37	38
Date	23.6.19	28.7.19	25.8.19	29.9.19	20.10.19	17.11.19	15.12.19	19.1.20	16.2.20	6.12.20									

\*creek not flowing

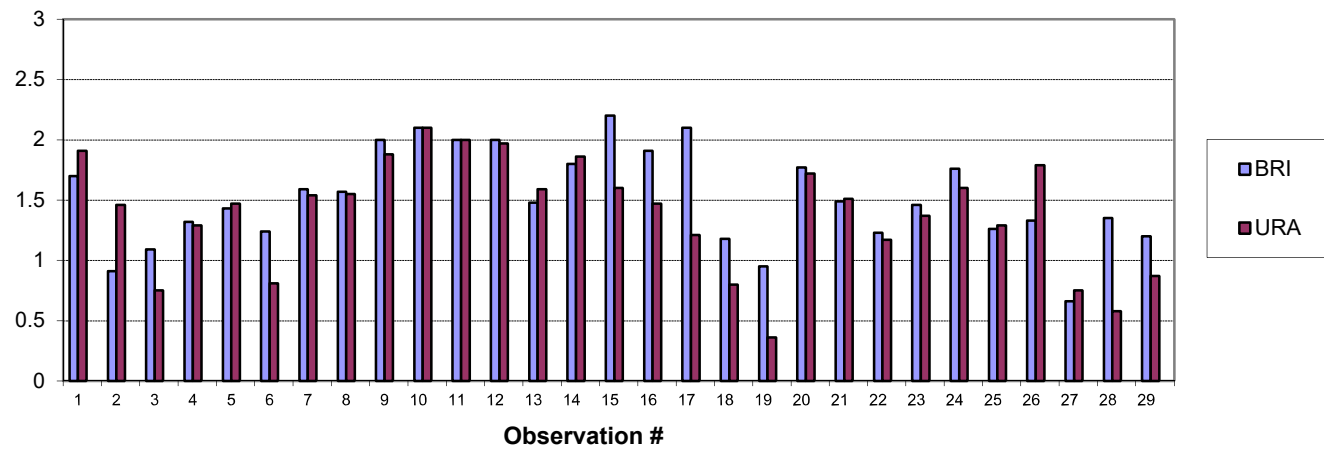
Legend: BRI = The Briars, URA = Uralla Rd bridge

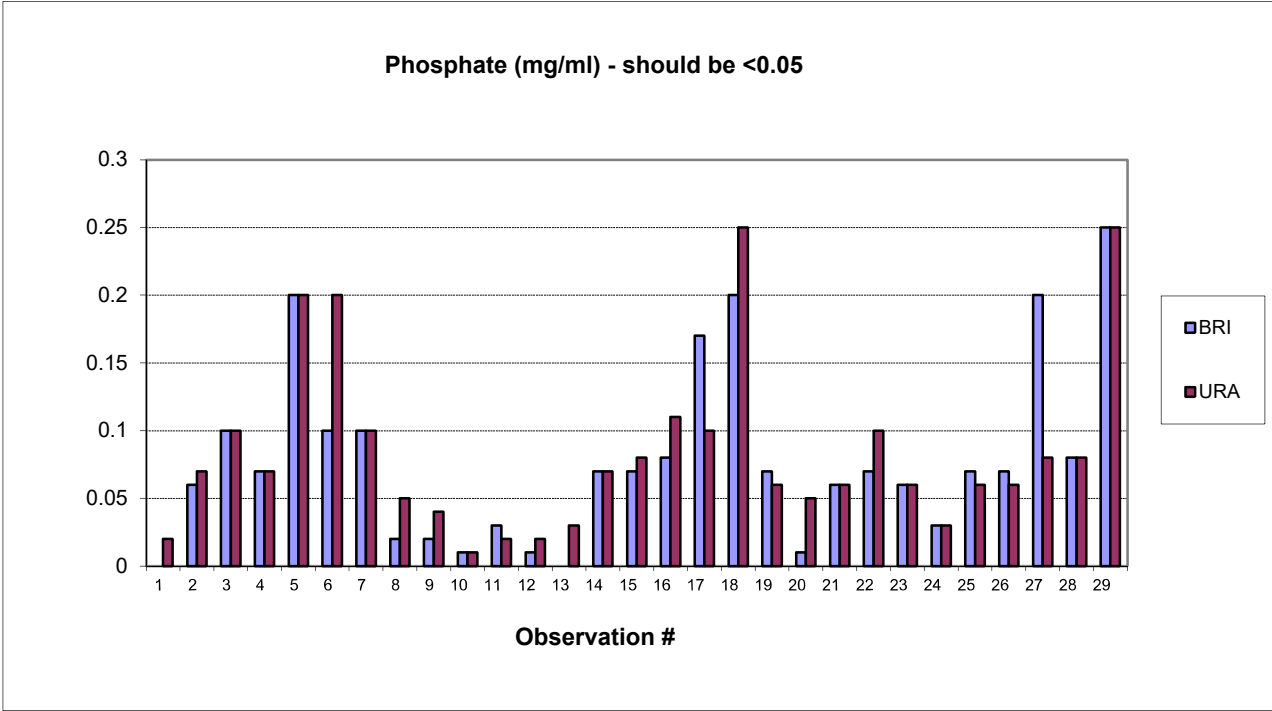
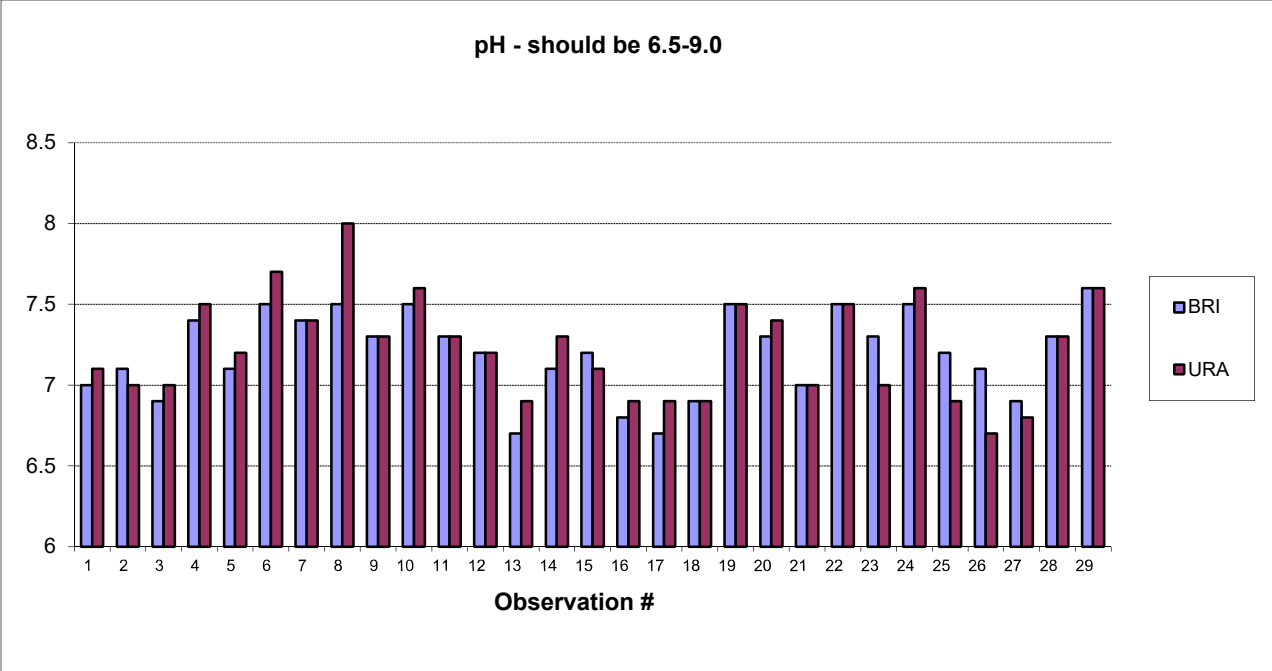


**Turbidity (NTU) - should be <15**

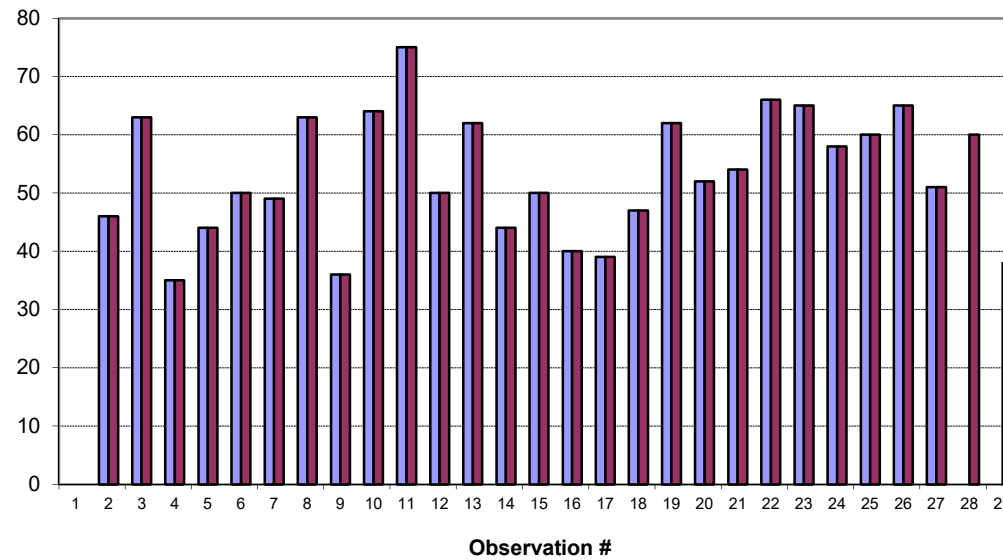


**Conductivity (mS/cm) - should be 0.5-1.5**





**Dissolved oxygen (% sat) - should be >80**



**Rainfall over previous month (mm)**

