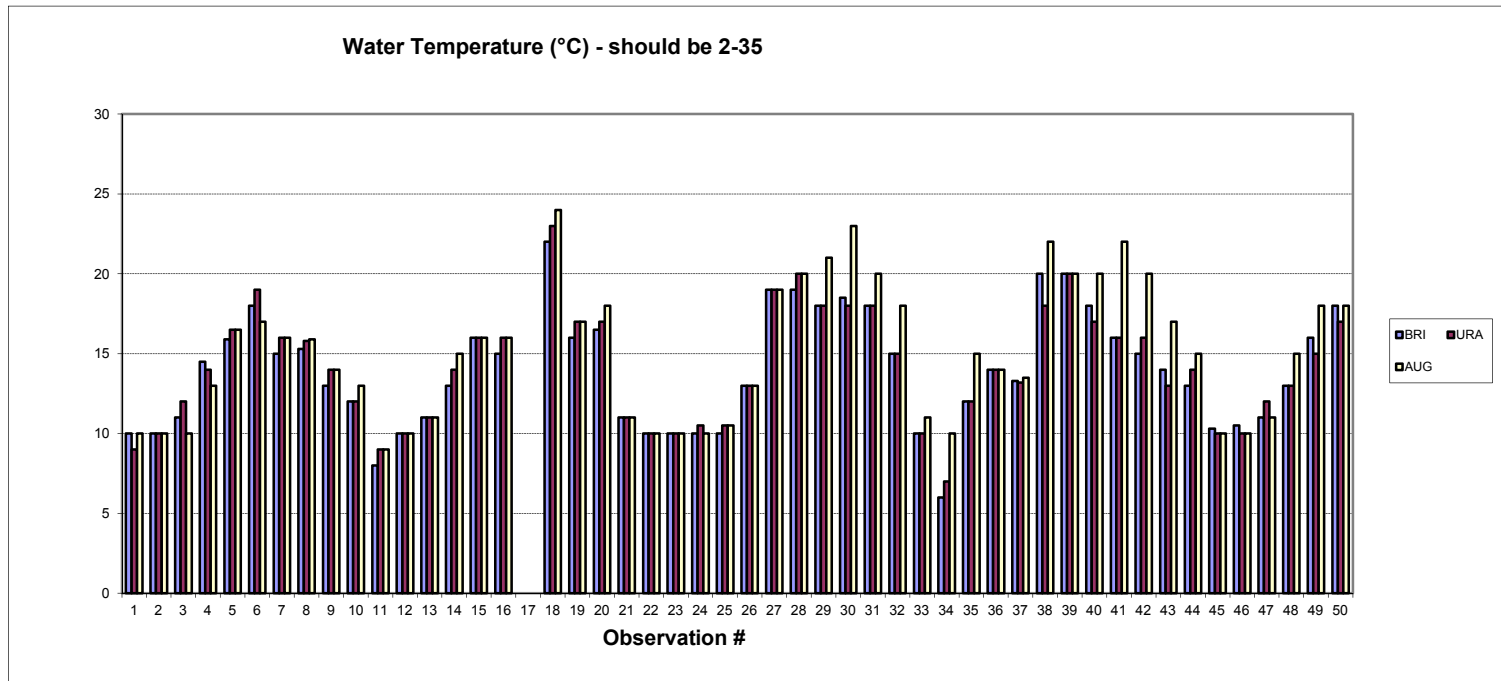


WaterWatch comparison Report Series 2 - 2010-2014

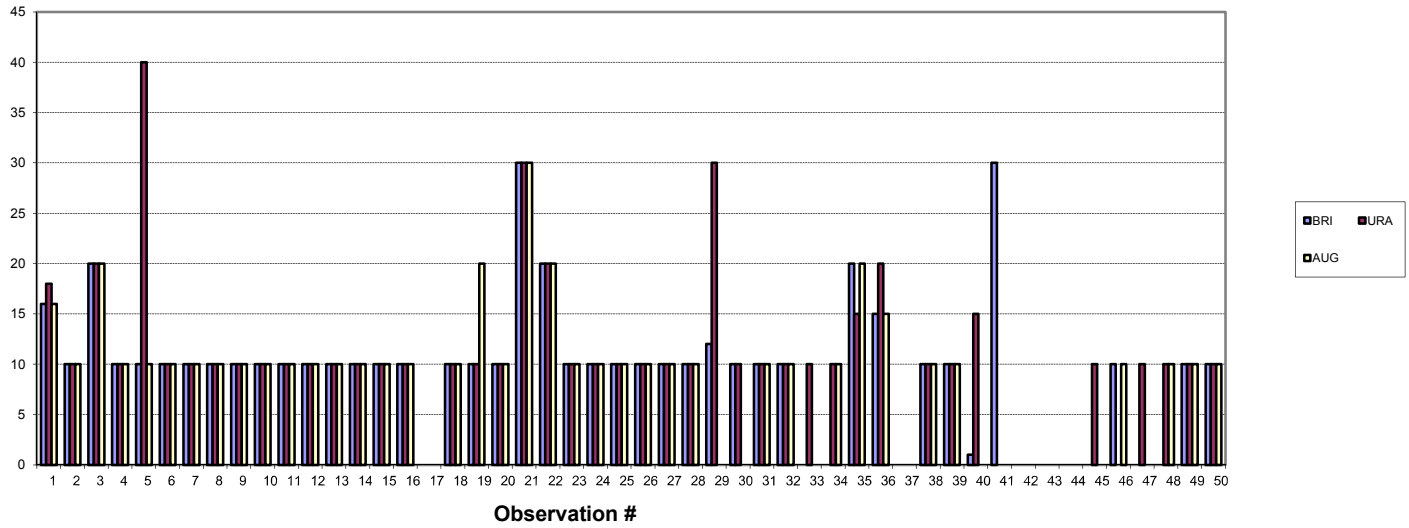
Observ'n #	1	2	3	4	5	6	7	8	9	10	11	12	13	14	15	16	17	18	19
Date	21.8.10	18.9.10	16.10.10	20.11.10	18.12.10	15.1.11	12.2.11	12.3.11	12.4.11	14.5.11	11.6.11	10.7.11	26.8.11	19.9.11	24.10.11	22.11.11	22.12.11	23.2.12	22.3.12
Observ'n #	20	21	22	23	24	25	26	27	28	29 *	30	31	32	33	34	35	36	37	38
Date	22.4.12	27.5.12	24.6.12	21.7.12	26.8.12	30.9.12	28.10.12	25.11.12	16.12.12	27.1.13	3.3.13	24.3.13	26.5.13	23.6.13	29.7.13	25.8.13	22.9.13	27.10.13	2.12.13
Observ'n #	39	40 *	41 *	42	43	44	45	46	47	48	49	50	51	52	53	54	55	56	57
Date	22.12.13	26.1.14	23.2.14	23.3.14	27.4.14	25.5.14	22.6.14	27.7.14	24.8.14	27.9.14	26.10.14	23.11.14							

*creek not flowing

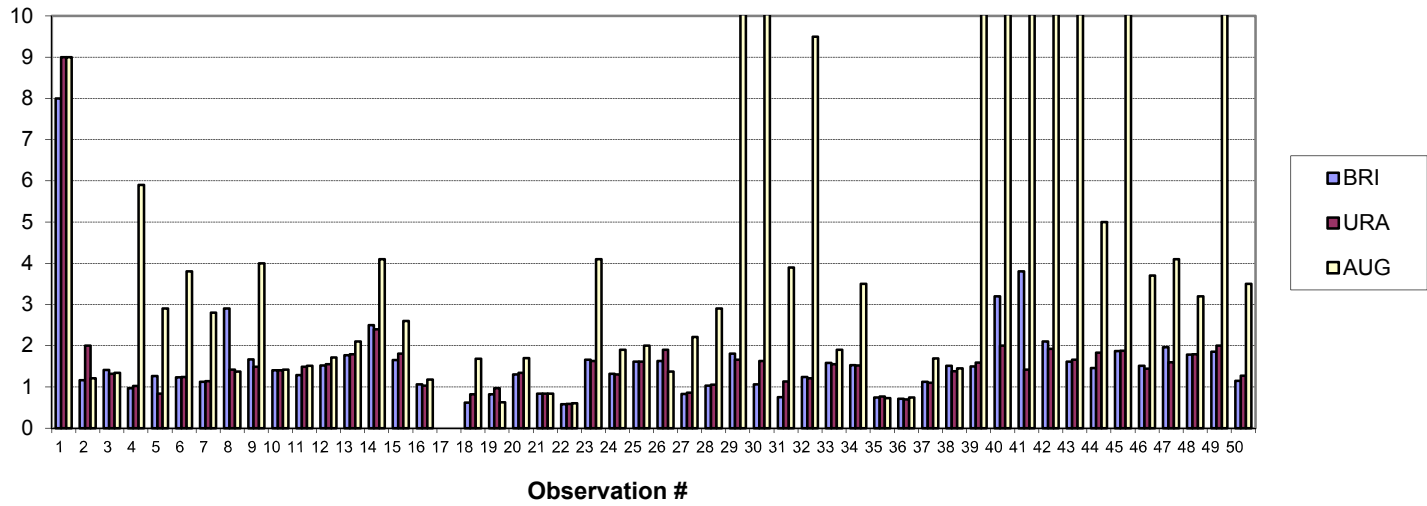
Legend: BRI = The Briars, URA = Uralla Rd bridge, AUG = Augusta St bridge



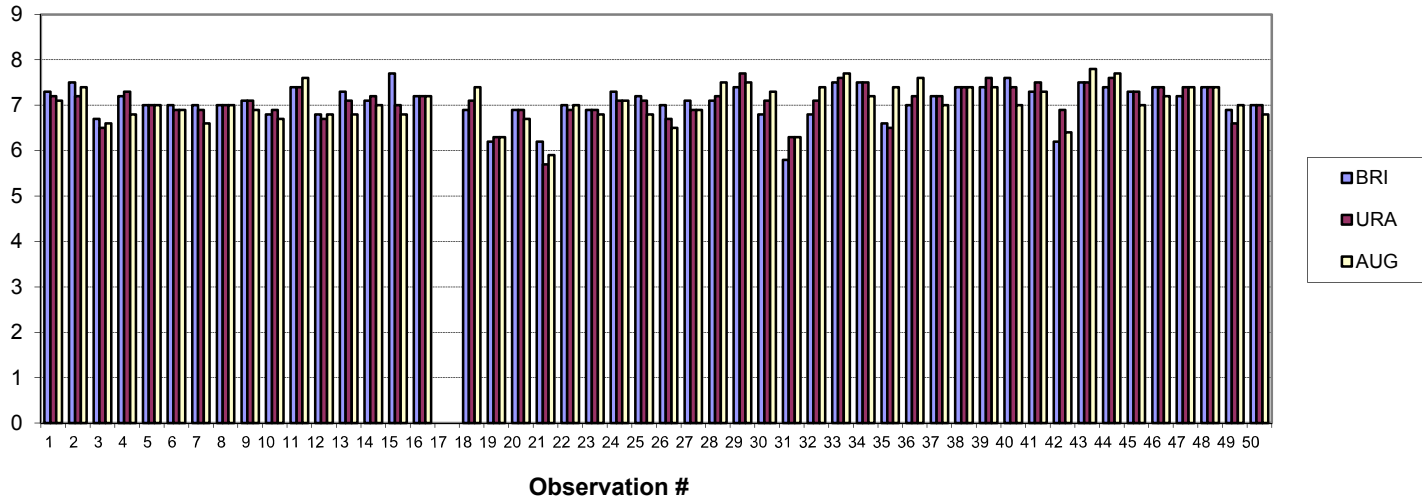
Turbidity (NTU) - should be <15



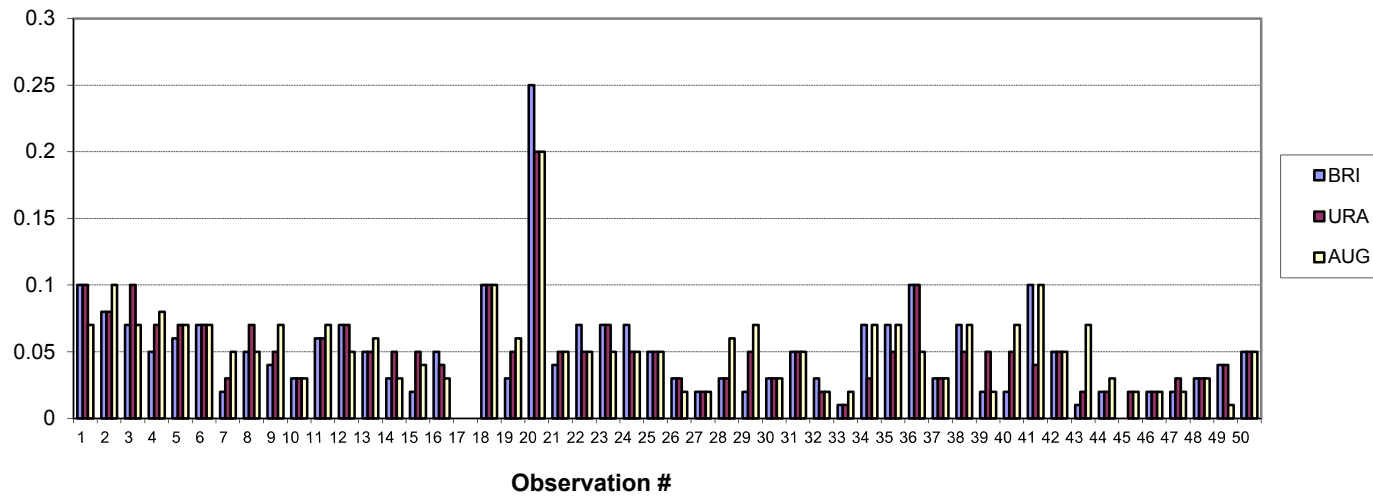
Conductivity (mS/cm) - should be 0.5-1.5



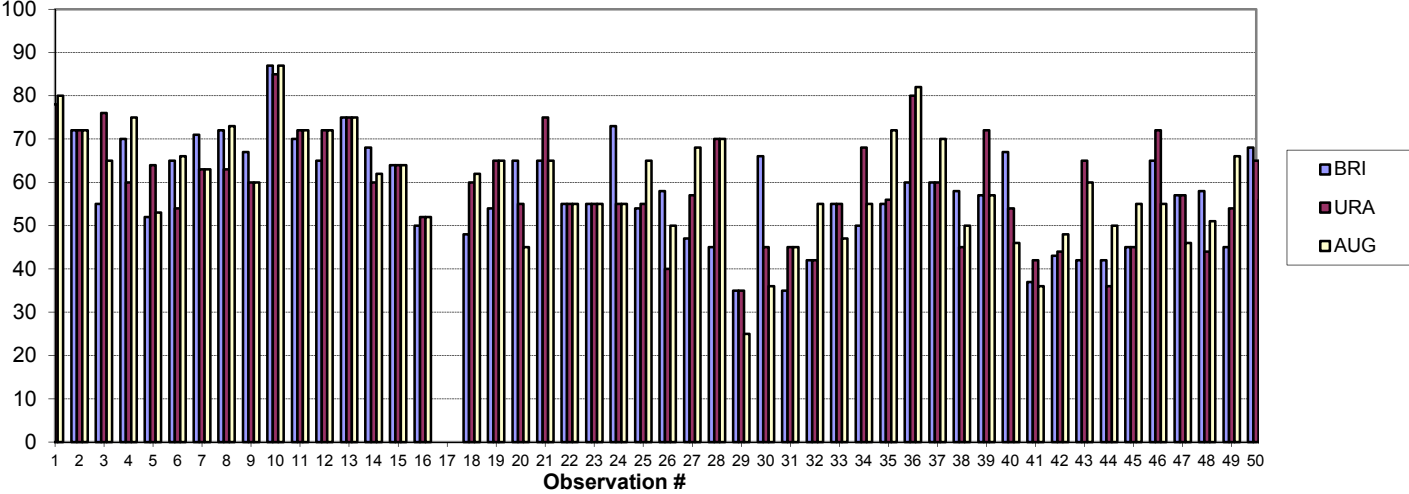
pH - should be 6.5-9.0



Phosphate (mg/ml) - should be <0.05



Dissolved oxygen (% sat) - should be >80



Rainfall over previous month (mm)

