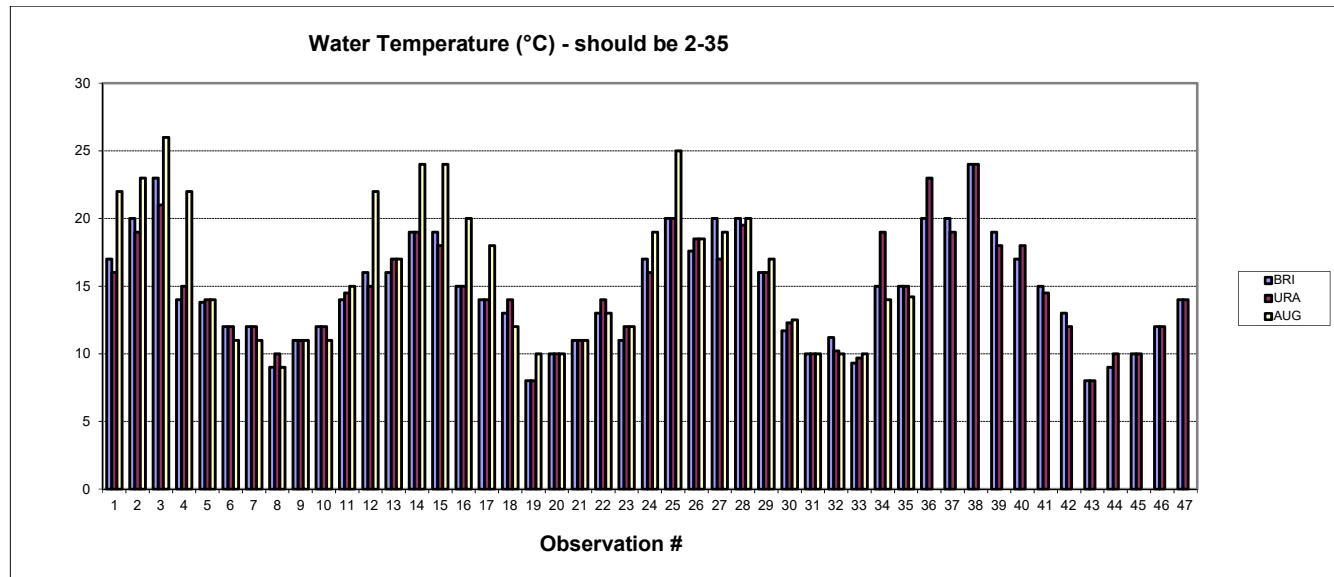


WaterWatch comparison Report. Series 3. October 2018

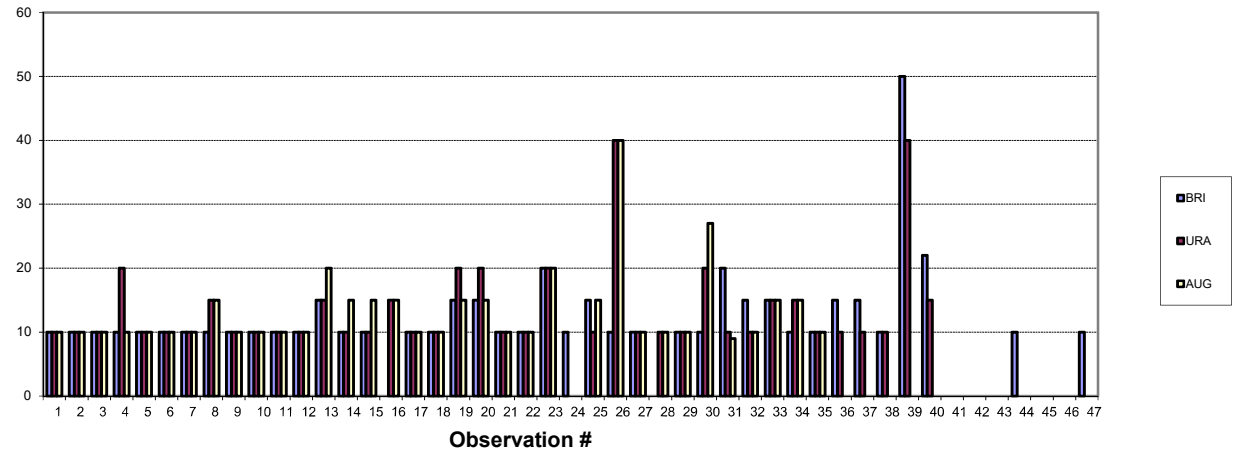
Observ'n #	1	2	3	4	5	6	7	8	9	10	11	12	13	14	15	16	17	18	19
Date	28.12.14	27.1.15	22.2.15	22.3.15	26.4.15	24.5.15	21.6.15	26.7.15	23.8.15	27.9.15	25.10.15*	22.11.15*	27.12.15	24.1.16	27.2.16	30.3.16	24.4.16	22.5.16	26.6.16
Observ'n #	20	21	22	23	24	25	26	27	28	29	30	31	32	33	34	35	36	37	38
Date	23.7.16	28.8.16	25.9.16	23.10.16	27.11.16	24.12.16	20.1.17	26.2.17	26.3.17	24.4.17	28.5.17	25.6.17	30.7.17	27.8.17	24.9.17	22.10.17	26.11.17	23.12.17	28.1.18
Observ'n #	39	40	41	42	43	44	45	46	47										
Date	25.2.18*	24.3.18	22.4.18	27.5.18	24.6.18	24.7.18	26.8.18	23.9.18	28.10.18										

*creek not flowing

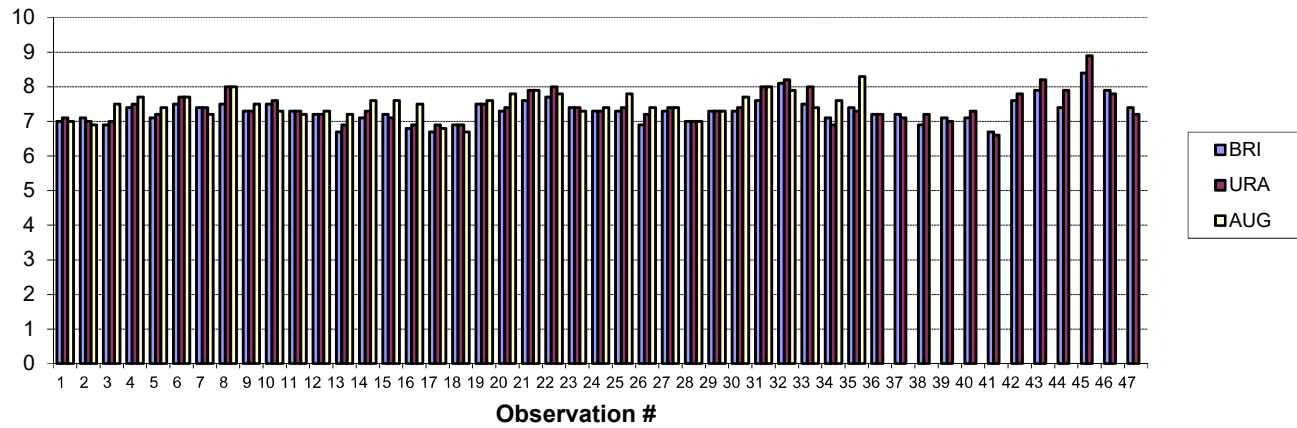
Legend: BRI = The Briars, URA = Uralla Rd bridge, AUG = Augusta St bridge



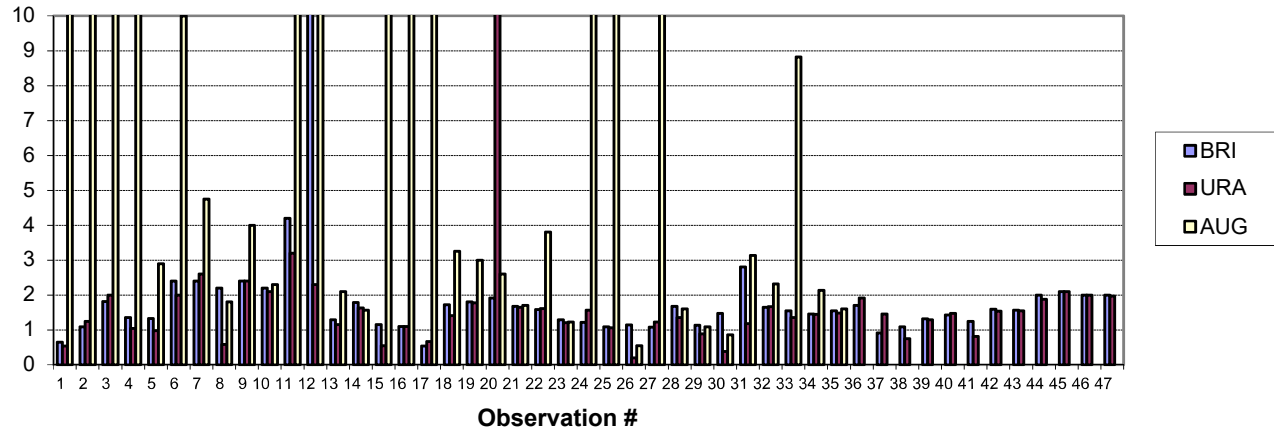
Turbidity (NTU) - should be <15



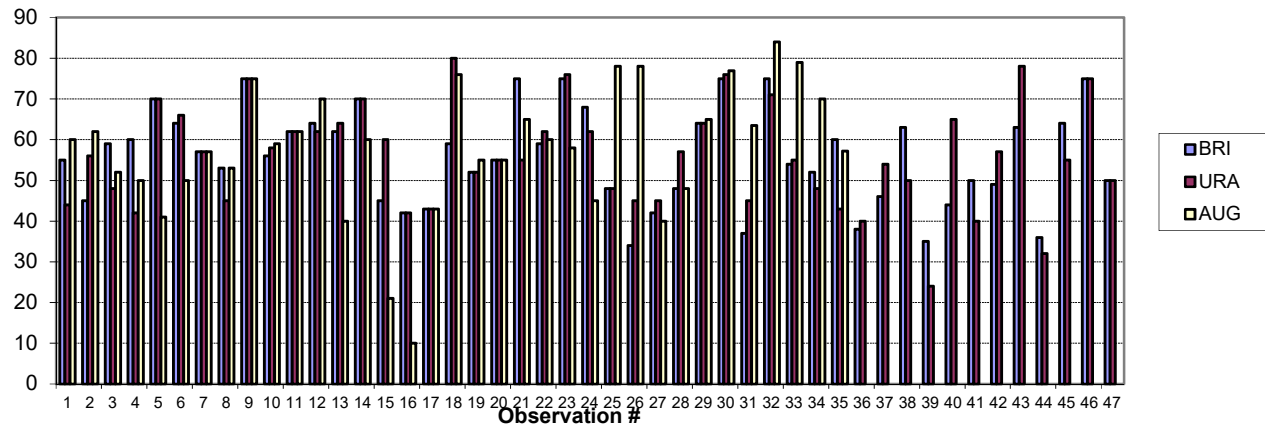
pH - should be 6.5-9.0



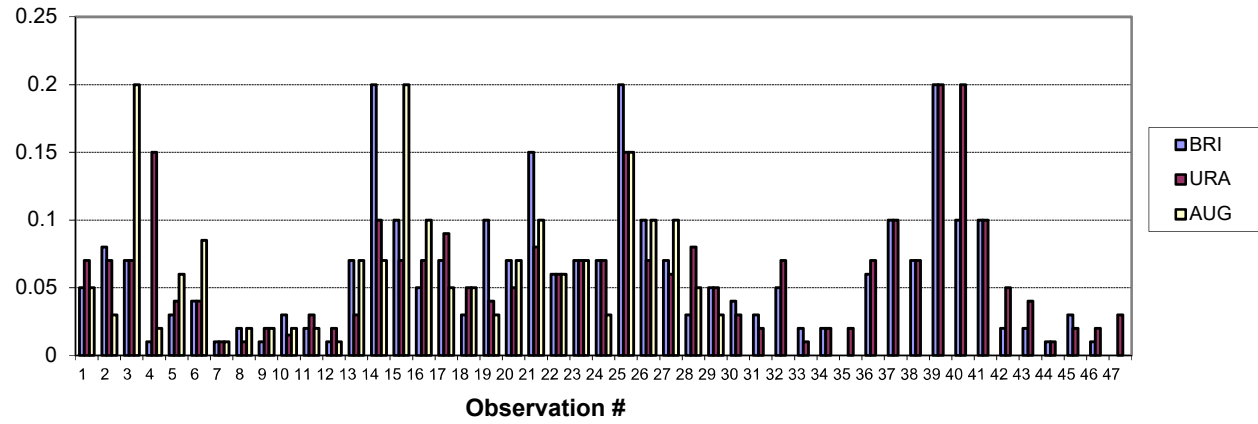
Conductivity (mS/cm) - should be 0.5-1.5



Dissolved oxygen (% sat) - should be >80



Phosphate (mg/ml) - should be <0.05



Rainfall over previous month (mm)

